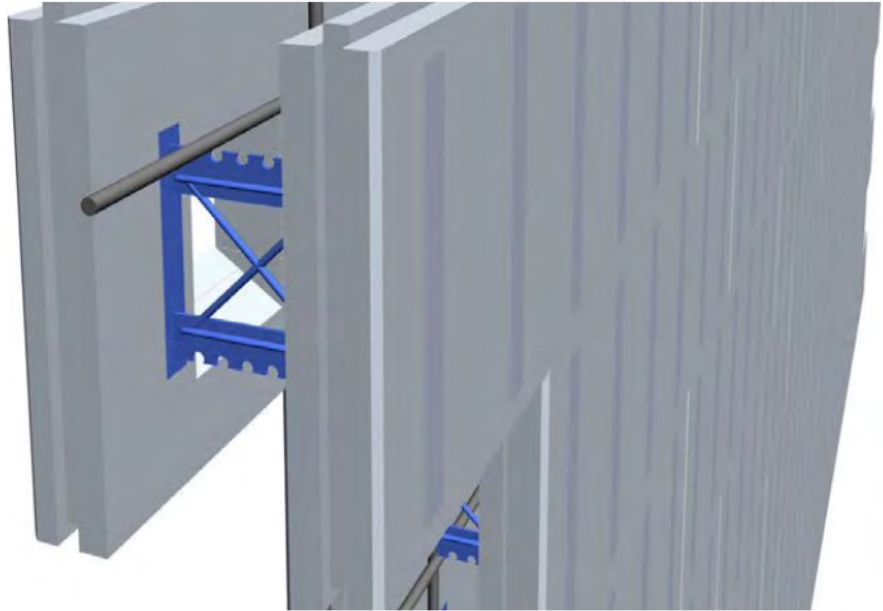
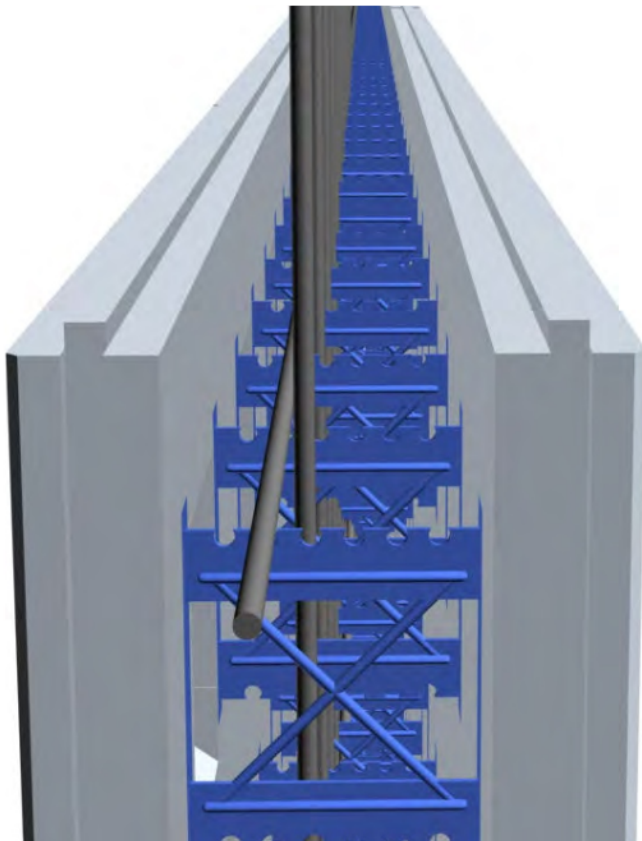


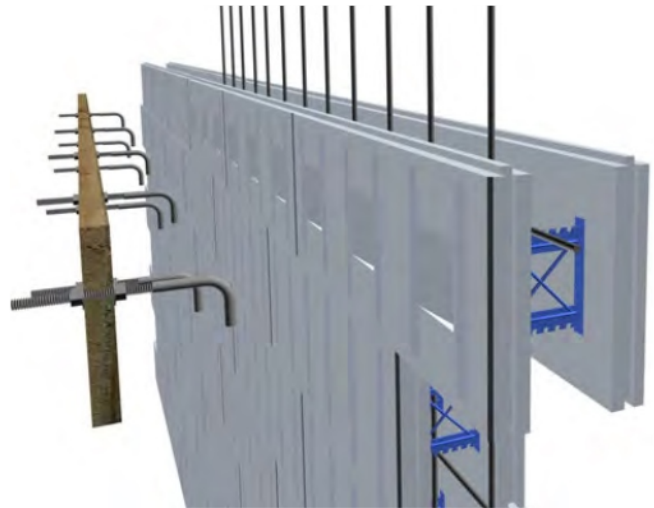
Step 1: Cut out ICF to the side the ledger is to be installed. The bottom shelf of the cut through the EPS foam should slope inward into the form at approximately 45 degrees.



Step 2: Place horizontal and vertical reinforcing steel as per manufacturer's or engineer's specifications.



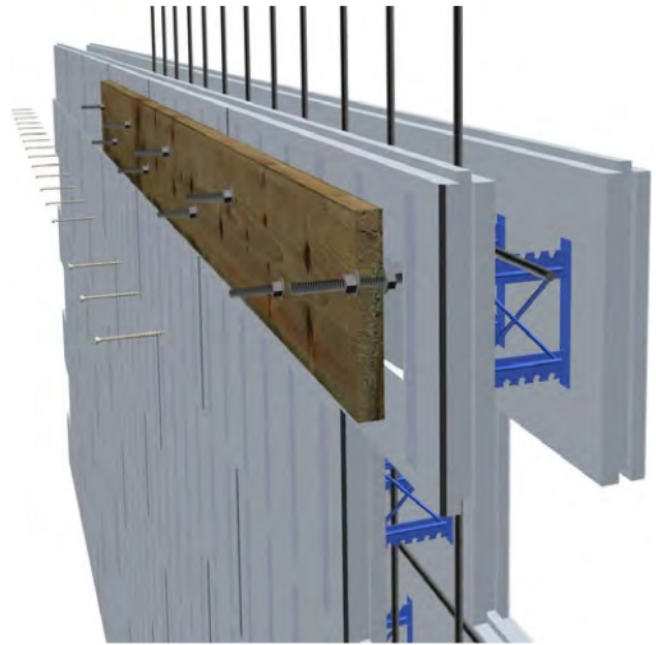
Step 3: Pre-assemble ledger with fasteners. Install foundation anchors through holes drilled into treated wood ledger. Hold the anchor bolts in place with corrosion-resistant washers and nuts.



Best Practice Note:

Stagger the anchor bolts between the top and bottom 1/3 of ledger to resist overturn. Ensure cut-outs are sufficient to accommodate anchor bolt lay-out and orientation.

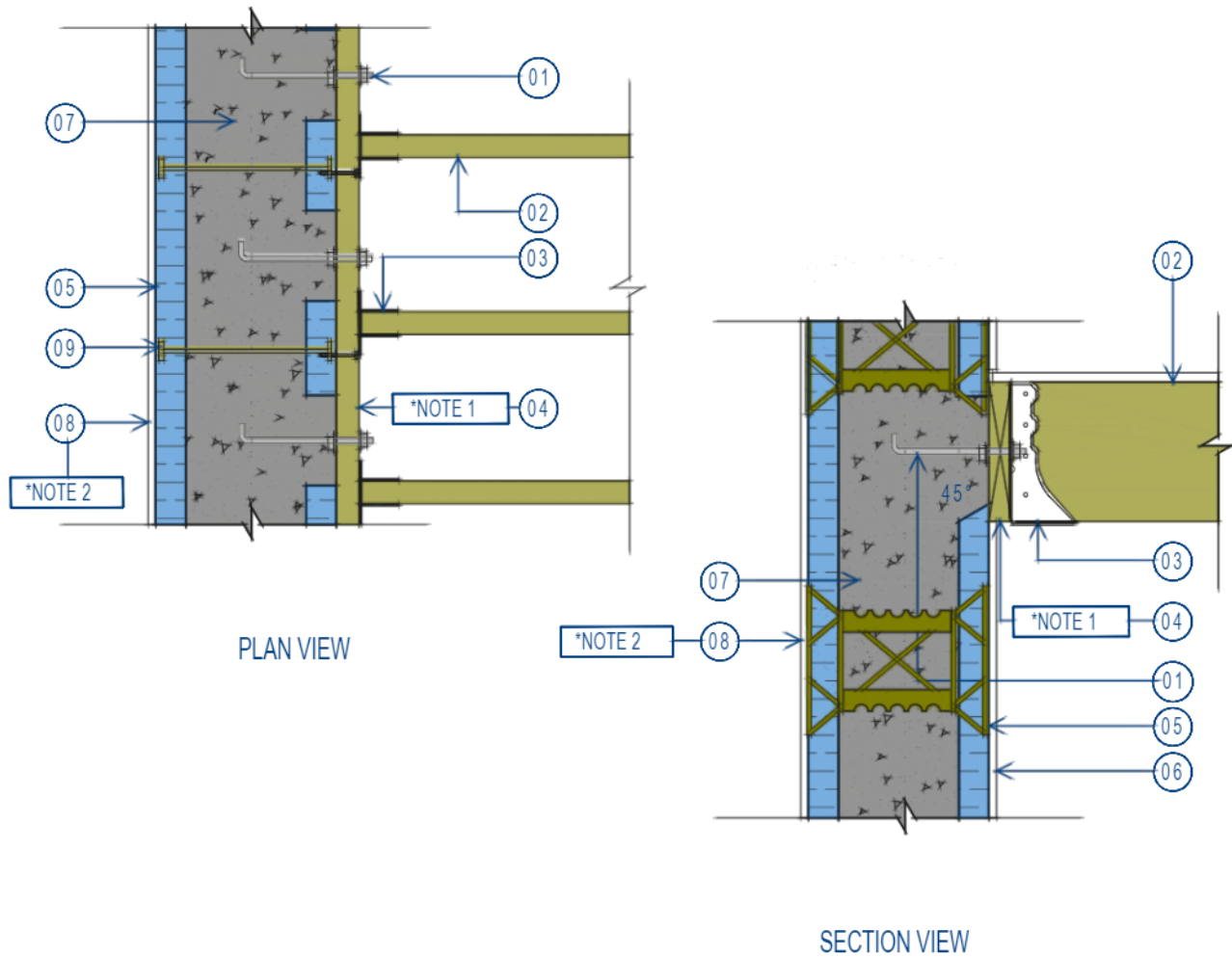
Step 4: Insert the ledger assembly into the form openings and hold the ledger in place with screws driven through the ledger and into the ICF web fastening strips. The anchor bolts are to be embedded in the wall to a depth of no less than 100 mm.



Step 5: Place and consolidate the concrete into the forms. Use pencil vibrators, target mix, and super plasticizers to ensure good flow and consolidation around the anchors, and into the cut-outs.

Step 6: After suitable cure time, continue with the installation of joist hangers and complete joist construction.





LEGEND

- | | |
|--|---|
| 01. ANCHOR BOLTS - AS PER CODE | 06. GYPSUM WALL BOARD |
| 02. JOISTS - AS PER CODE | 07. CONCRETE CORE |
| 03. JOIST HANGERS - AS PER CODE | 08. EXTERIOR CLADDING (W/ TREATED FURRING STRIPS IF DESIRED) - SEE NOTE 2 |
| 04. TREATED LEDGER BOARD - SEE NOTE 1 | 09. ICF WEBS |
| 05. ICF FORM | |

*NOTE 1: LEDGERS ARE PRE-ASSEMBLED W/ ANCHOR BOLTS & HARDWARE & FASTENED TO THE ICF WEB FLANGES W/ SCREWS PRIOR TO CONCRETE POUR.

*NOTE 2: ICF WALLS ARE, IN MOST CASES, CONSIDERED A MASS WALL AND THEREFORE THE FIRST AND SECOND PLANE OF PROTECTION NEED NOT INCORPORATE A CAPILLARY BREAK. THE WALL MUST BE DESIGNED AND CONSTRUCTED WITH APPROPRIATE TRIM, ACCESSORY PIECES AND FASTENERS TO MINIMIZE AND MANAGE THE PASSAGE OF RAIN OR SNOW INTO THE WALLS.

FLAT INSULATING CONCRETE FORM WALLS(ICF) DETAIL 3.6.05 LEDGER CONNECTION

FOR ILLUSTRATION PURPOSES ONLY - NOT FOR CONSTRUCTION