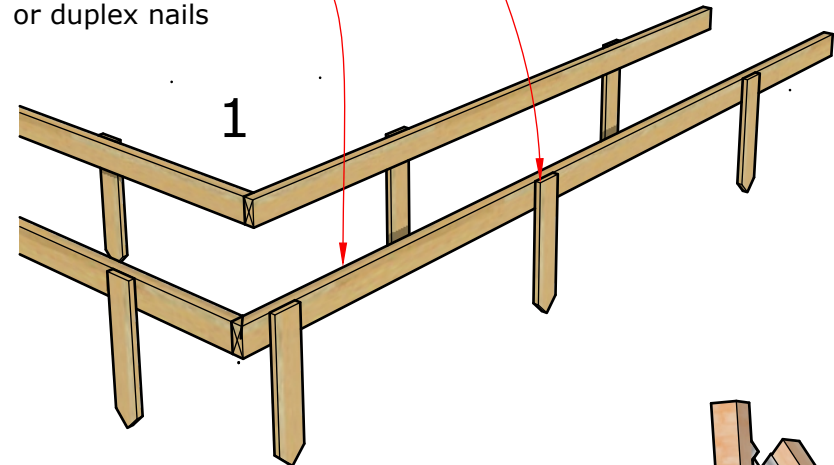
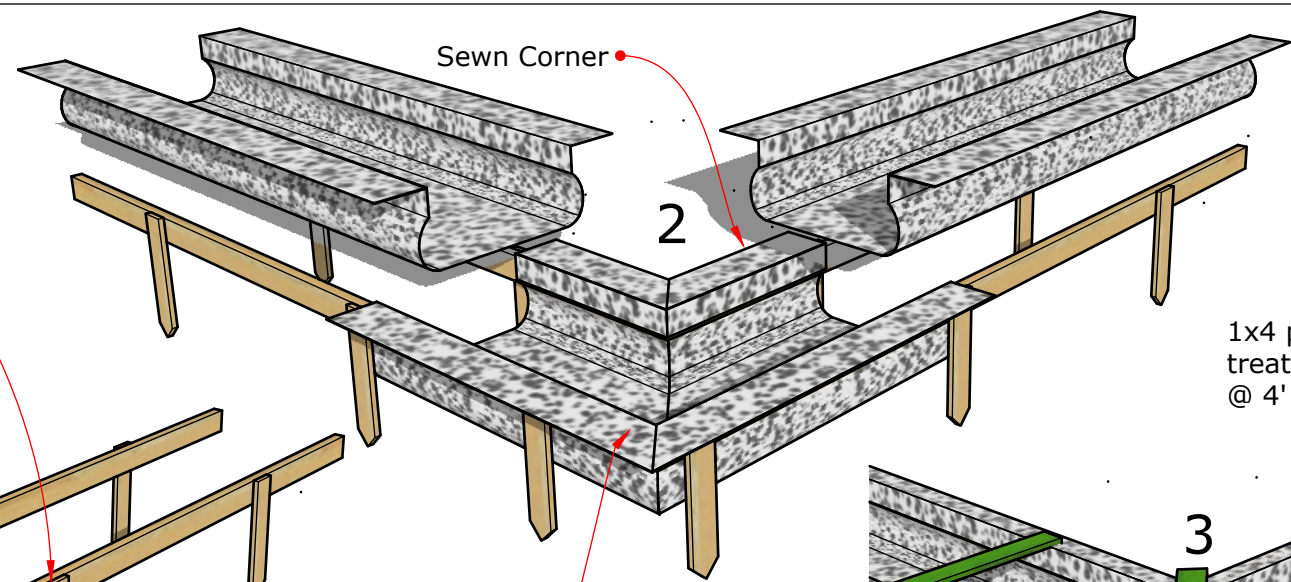


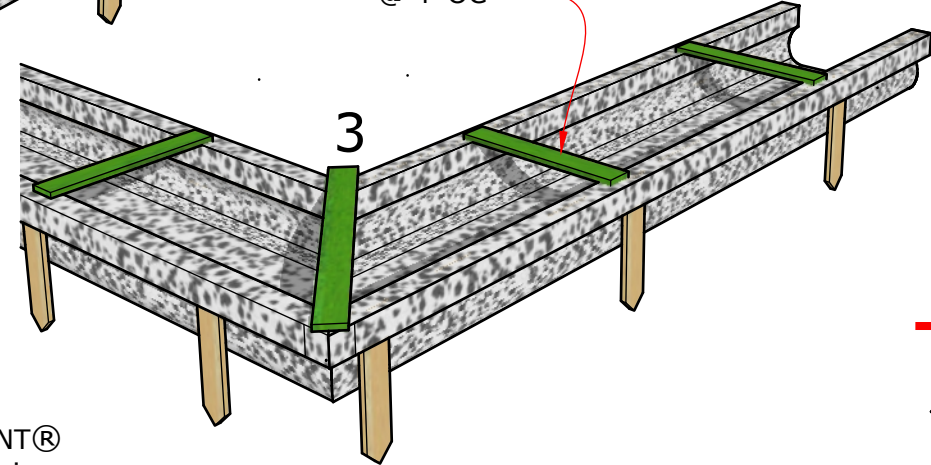
REF:

Stakes driven firmly into the ground to eliminate any & all settlement @ 4' OC minimum
2x4 rail boards leveled to 1/4" accuracy. Attach firmly with 2 1/2-3" screws or duplex nails

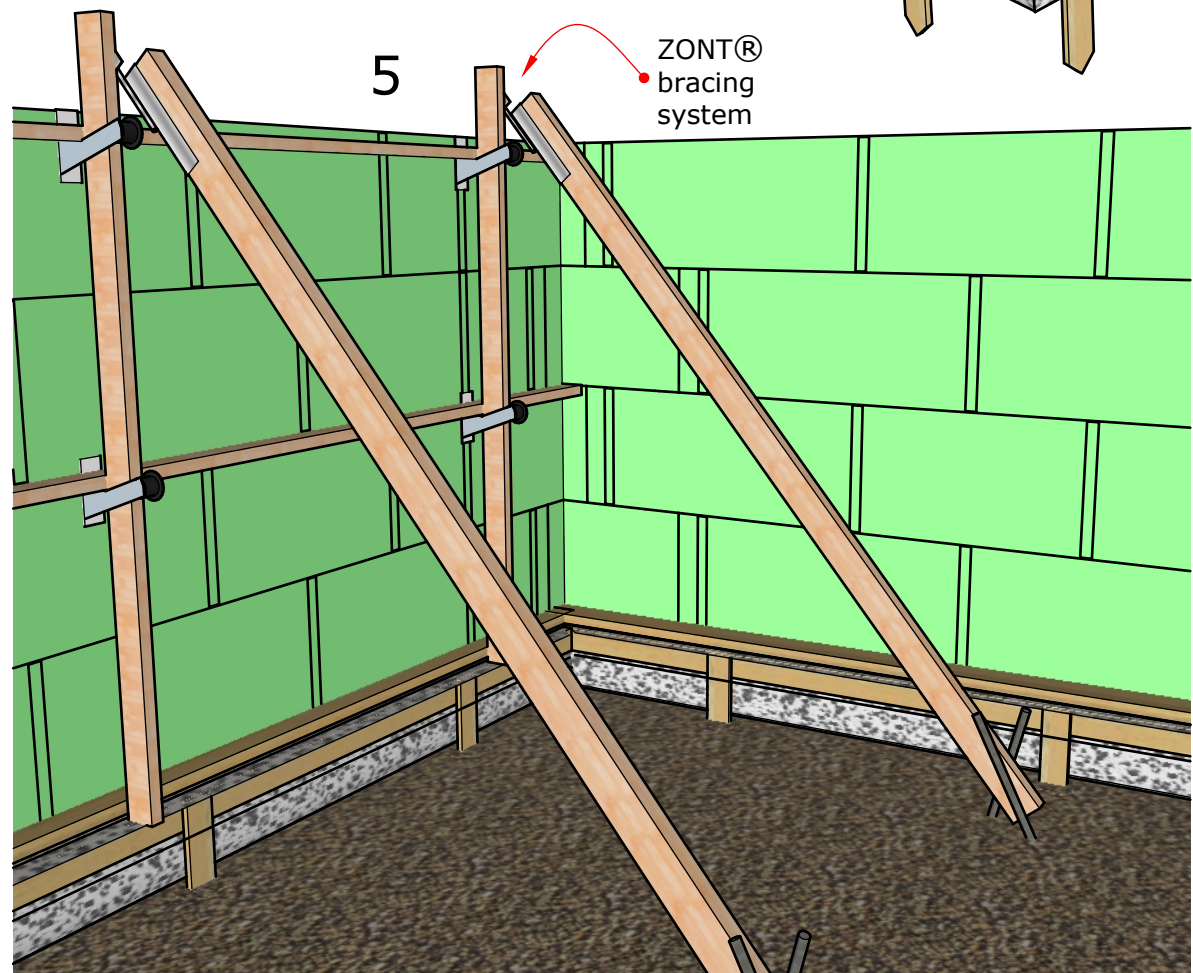
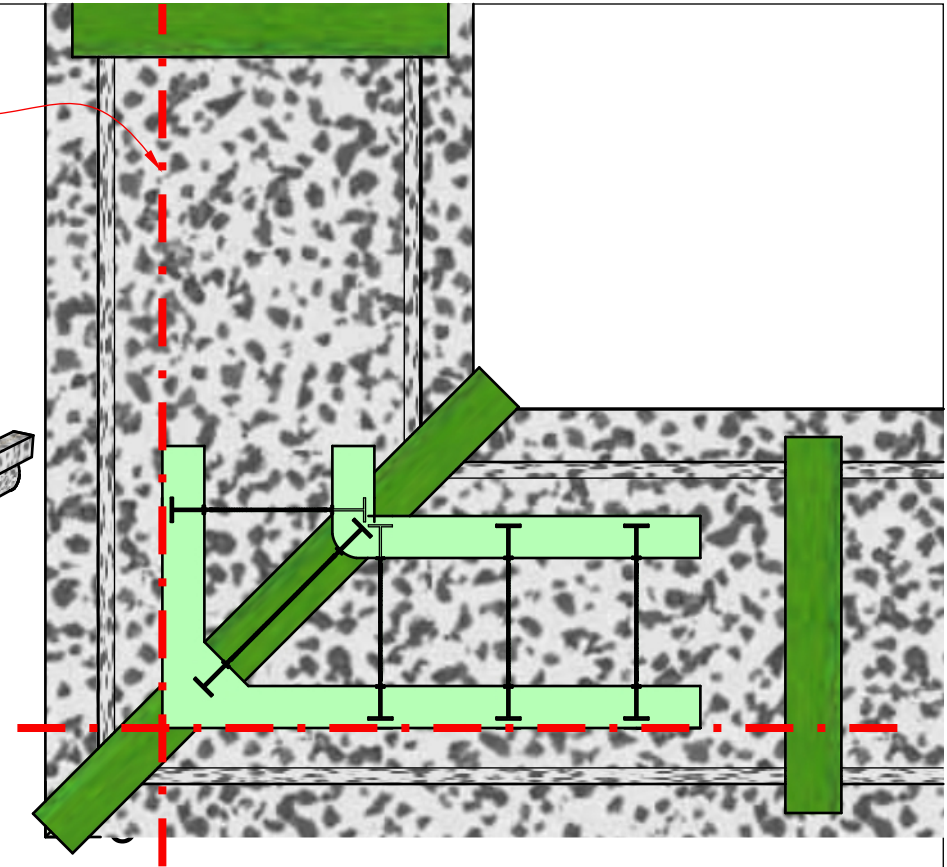


FASTFOOT® tack hammered to rail boards

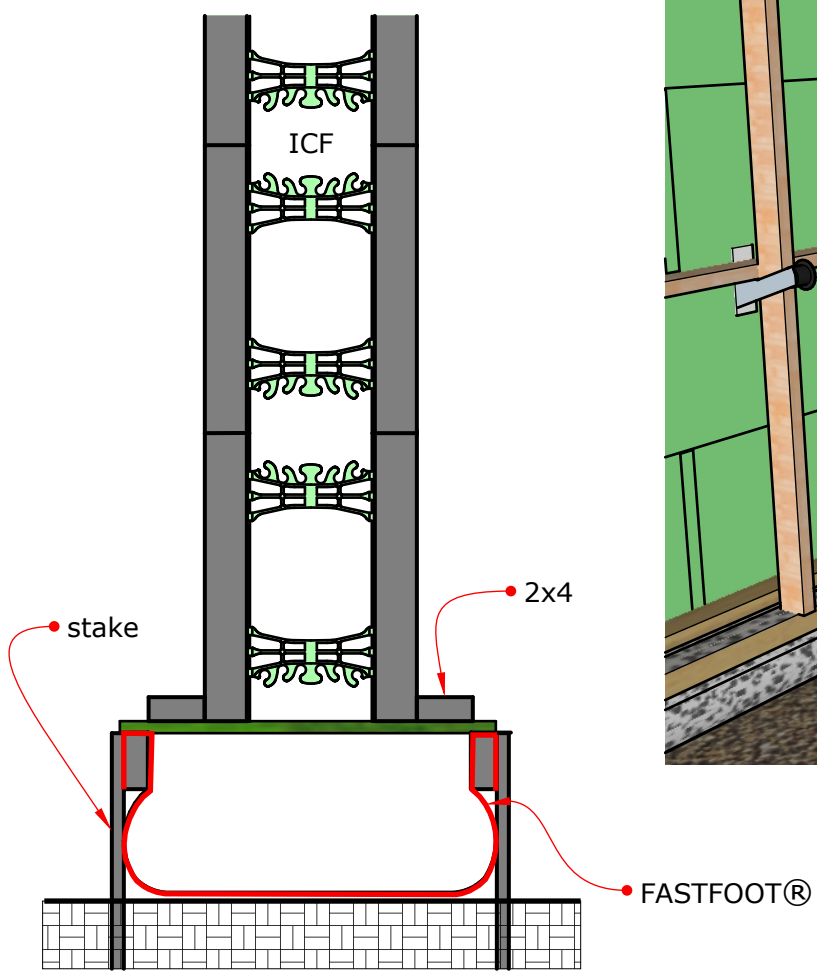
1x4 pressure treated cleats @ 4' OC



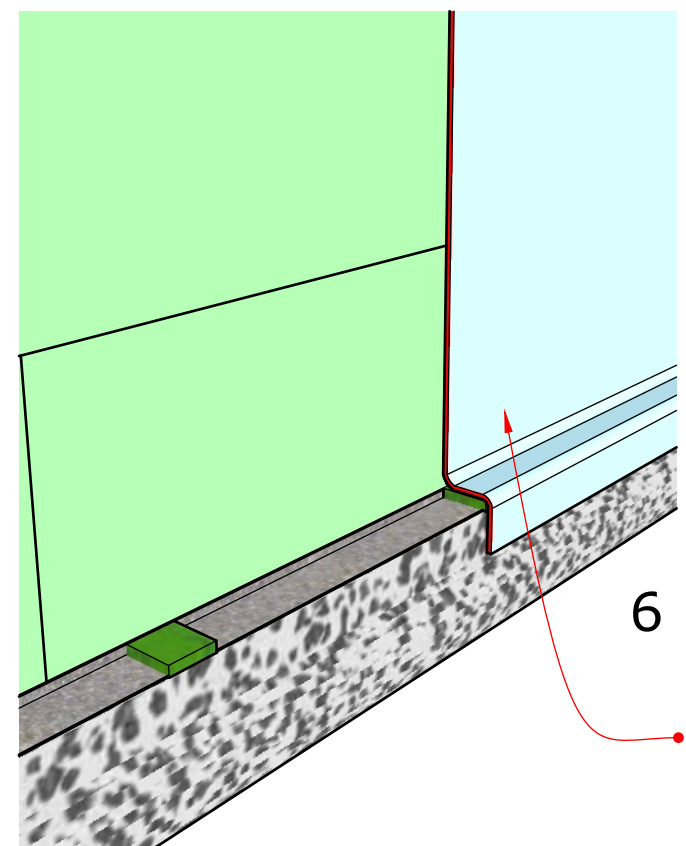
Snapped Chalk Line



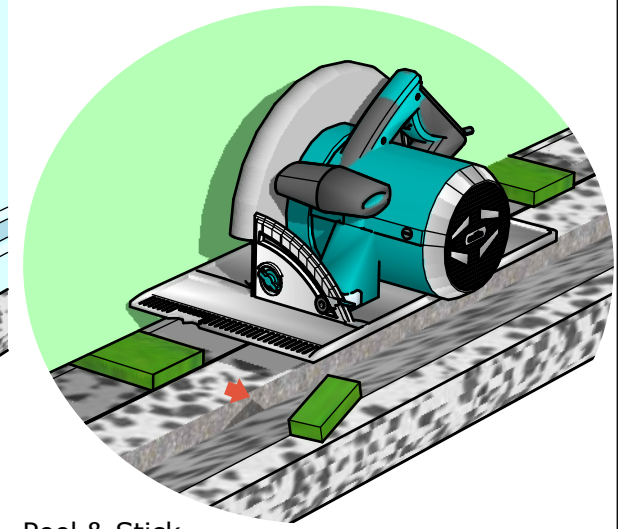
ZONT® bracing system



FASTFOOT®



After removing 2x4 rails, cut off cleat overhangs to allow for better Peel & Stick application



6

Peel & Stick Waterproofing brought down over footing

PROPRIETARY AND CONFIDENTIAL
THE INFORMATION CONTAINED IN THIS DRAWING IS THE SOLE PROPERTY OF FAB-FORM INDUSTRIES LTD. ANY REPRODUCTION IN PART OR AS A WHOLE WITHOUT THE WRITTEN PERMISSION OF FAB-FORM INDUSTRIES IS PROHIBITED

FAB-FORM INDUSTRIES

www.fab-form.com (888)303-3278

DRAWN: SFRG CHECKED: DX APPROVED: JF DATE: 8 Jan 2019
REF: Corner Monopour without MPSS

TITLE:
Staked Monopour Foundation

DRG NO: General Layout REV: 1