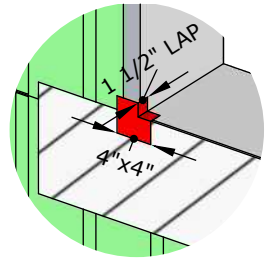
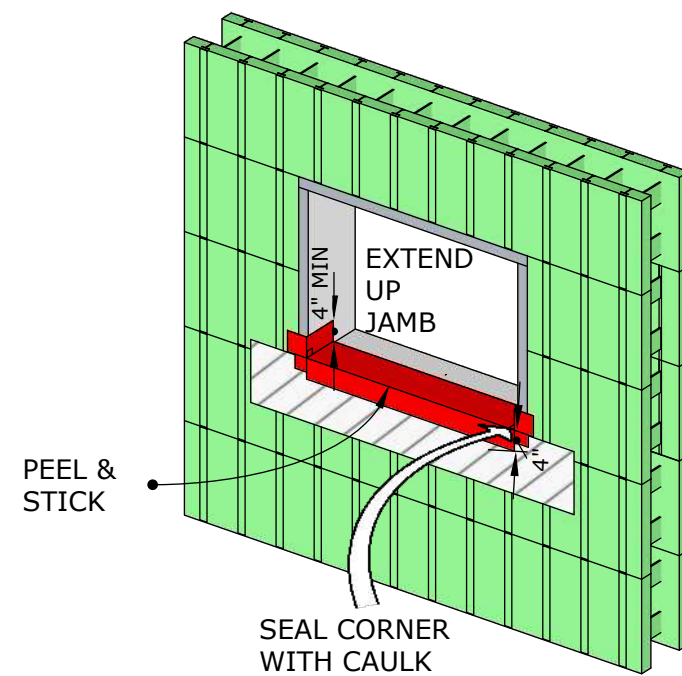


FOLD TAB TIGHTLY IN CORNER



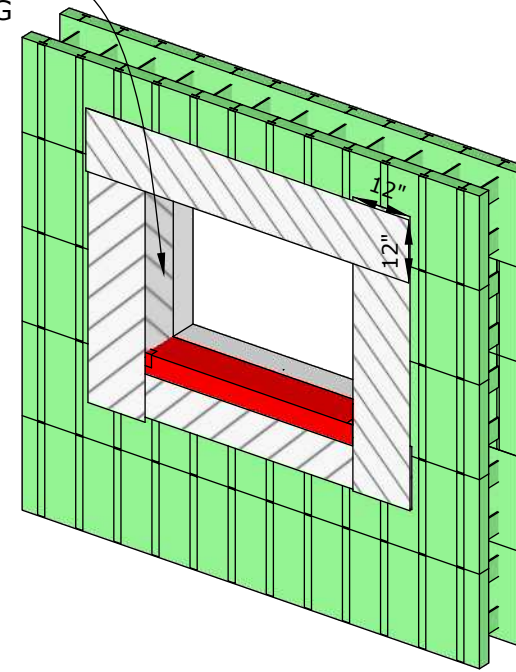
12" STRIP OF SA MEMBRANE ATTACHED ON TOP EDGE ONLY SO BUILDING PAPER CAN BE INSTALLED UNDERNEATH LATER



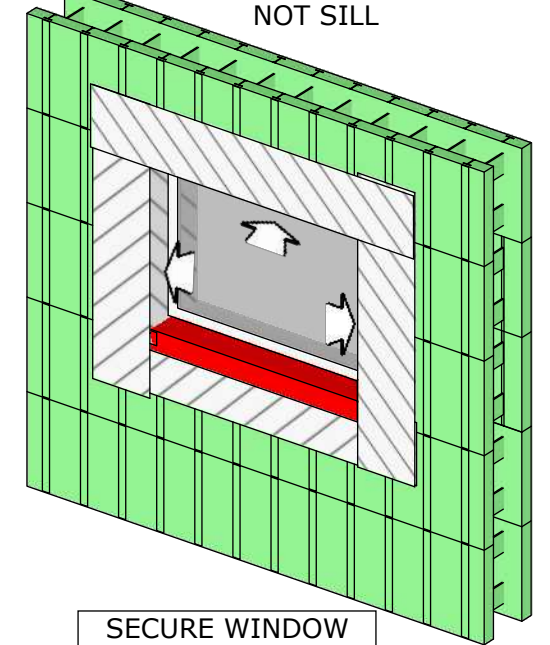
PEEL & STICK

SEAL CORNER WITH CAULK

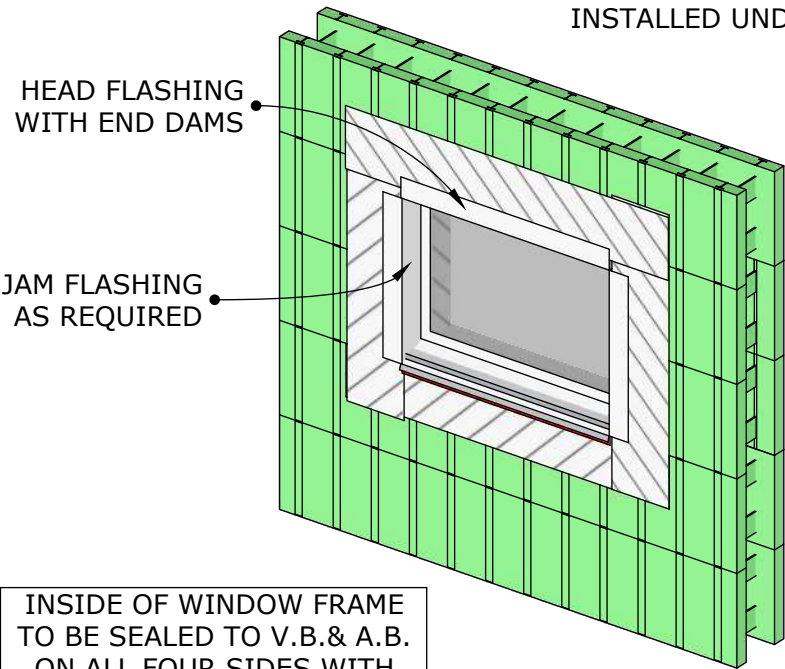
SA MEMBRANE RETURNED INTO OPENING



SEAL WITH CAULK - JAM & HEAD NOT SILL

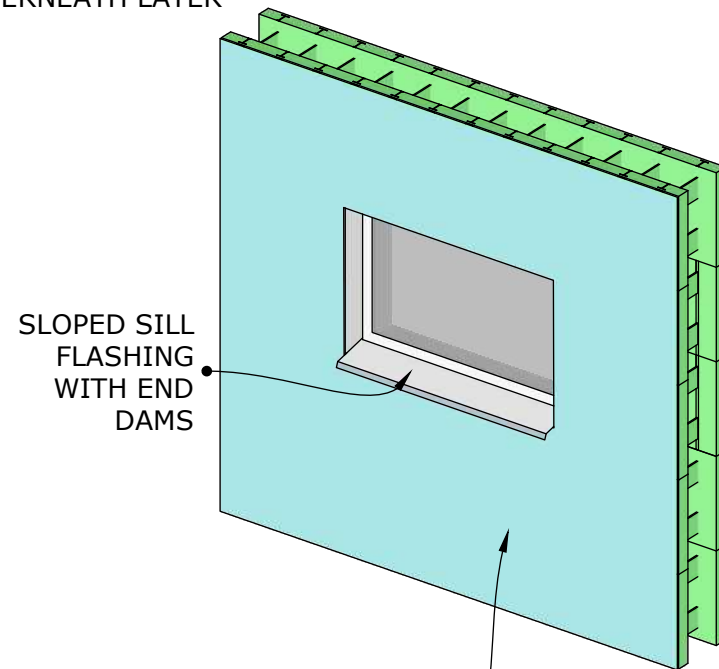


SECURE WINDOW INTO OPENING PER MANUFACTURER'S INSTRUCTIONS



HEAD FLASHING WITH END DAMS

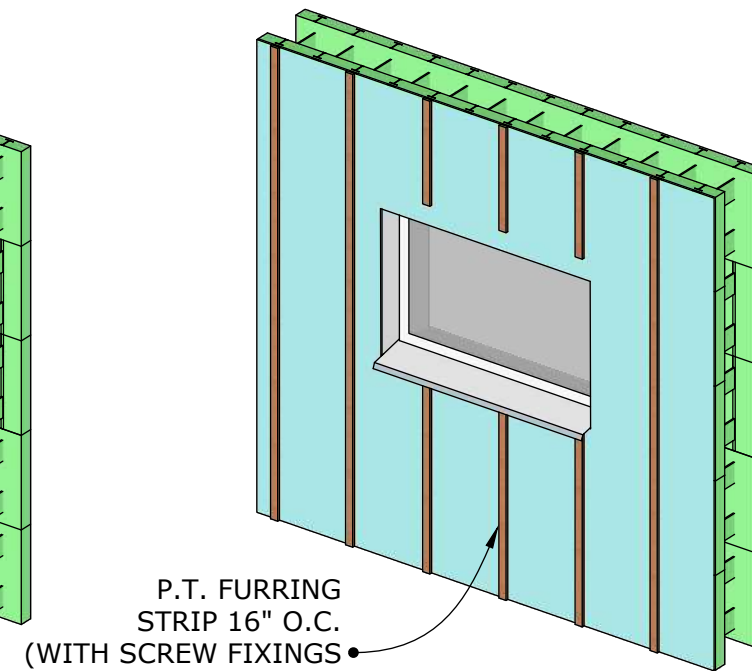
JAM FLASHING AS REQUIRED



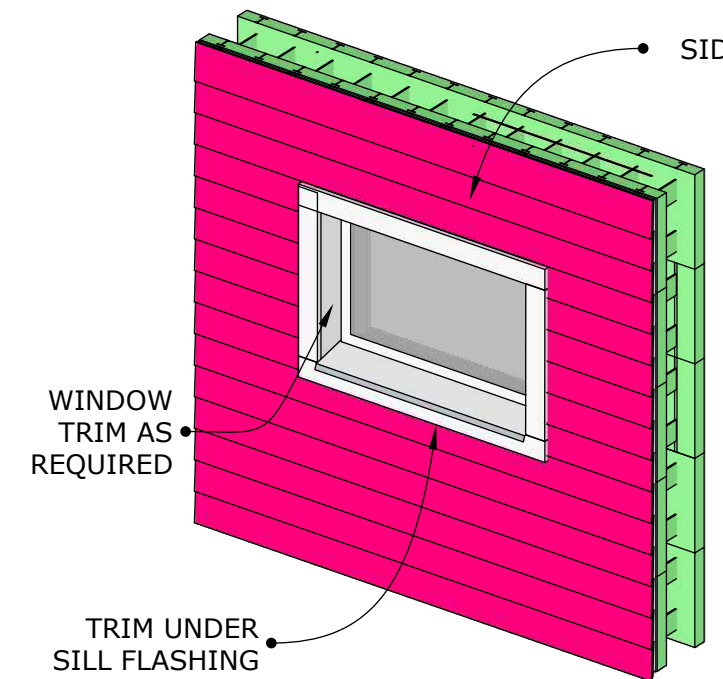
SLOPED SILL FLASHING WITH END DAMS

SELF-ADHERED WATER RESISTIVE VAPOR PERMEABLE AIR BARRIER (VAPROSHIELD WRAPSHIELD SA OR SIMILAR). INSTALL OVER & TAPE TO HEAD FLASHING.

INSIDE OF WINDOW FRAME TO BE SEALED TO V.B. & A.B. ON ALL FOUR SIDES WITH POLYURETHANE CAULK @ SILL AND ROD & CAULK AT JAMBS & HEAD



P.T. FURRING STRIP 16" O.C. (WITH SCREW FIXINGS SUITABLE FOR P.T. CHEMICAL USED)



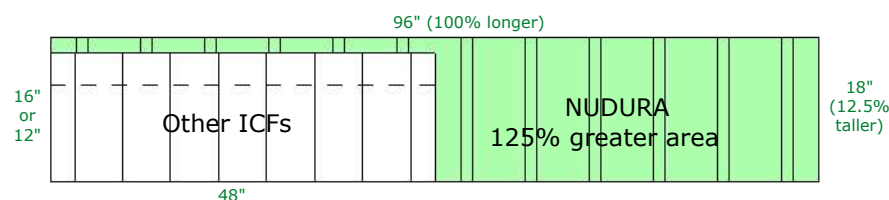
SIDING

WINDOW TRIM AS REQUIRED

TRIM UNDER SILL FLASHING

ADVISORY ONLY - REFER TO PERMIT DRAWINGS

The Quickest ICF Block



PROPRIETARY AND CONFIDENTIAL
 THIS DRAWING IS FOR ESTIMATION PURPOSES ONLY - DO NOT USE FOR ANY OTHER REASON
 THE INFORMATION CONTAINED IN THIS DRAWING IS THE SOLE PROPERTY OF FAB-FORM INDUSTRIES LTD

VANCOUVER ICF

www.vancouvericf.com

(604)229-9829

DRAWN: SFRG

CHECKED: DX

APPROVED: JF

DATE: 4 Aug 2022

REF:

Windows Waterproofing

REV: